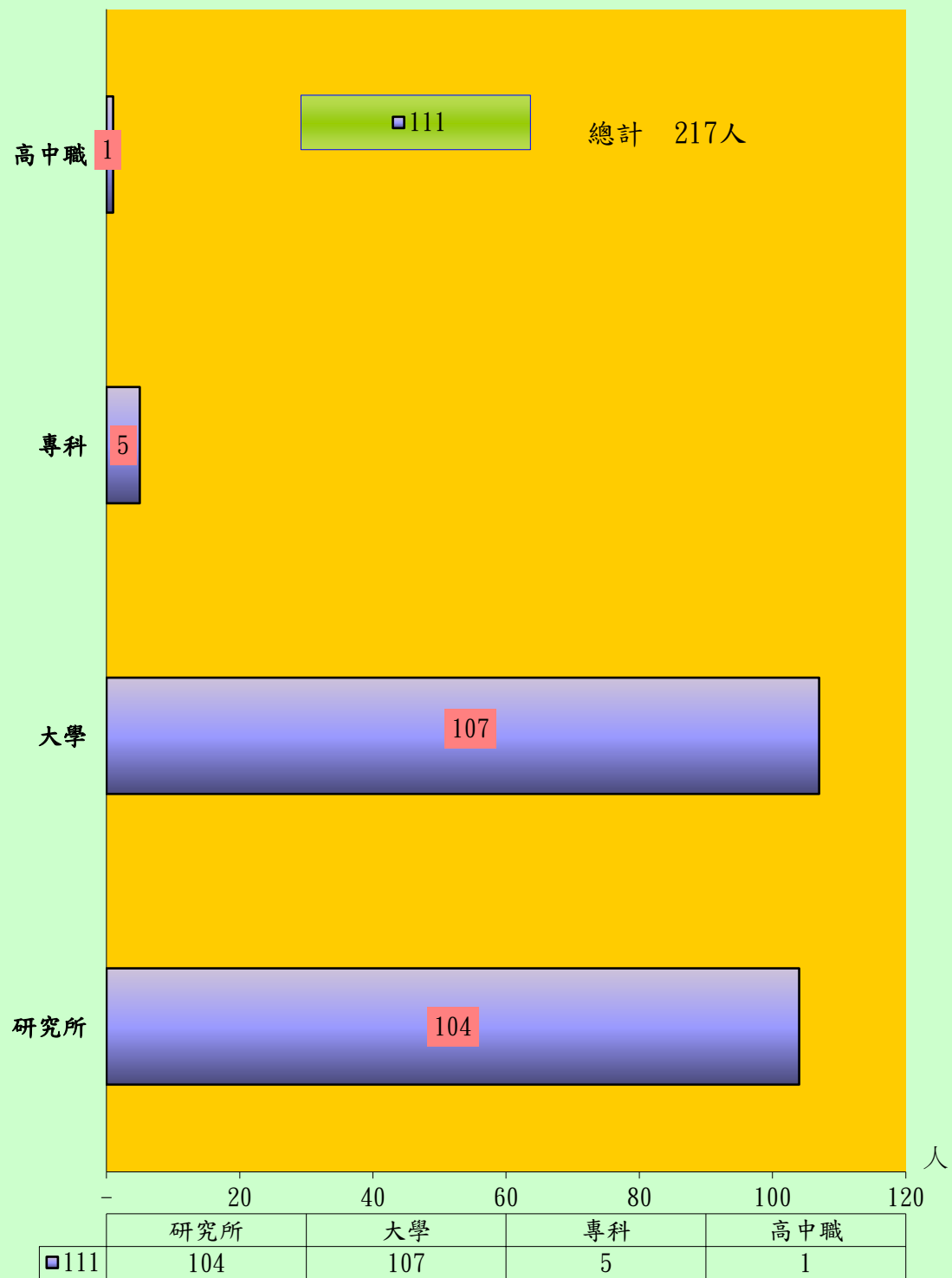
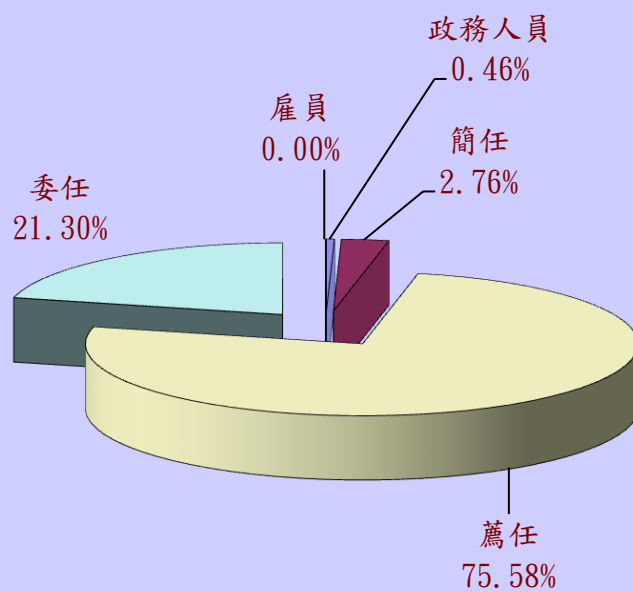


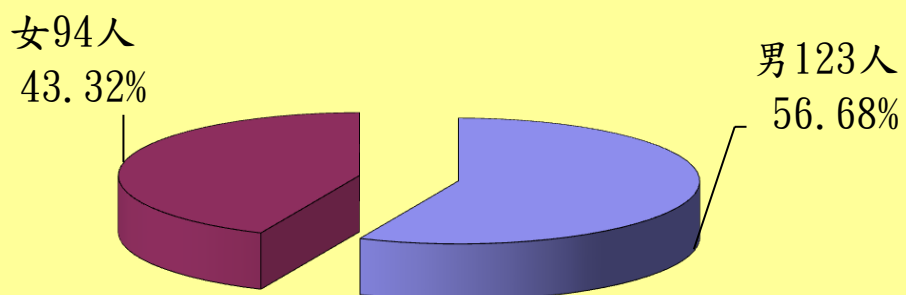
一、本局暨所屬機關現任公教人員數—教育程度



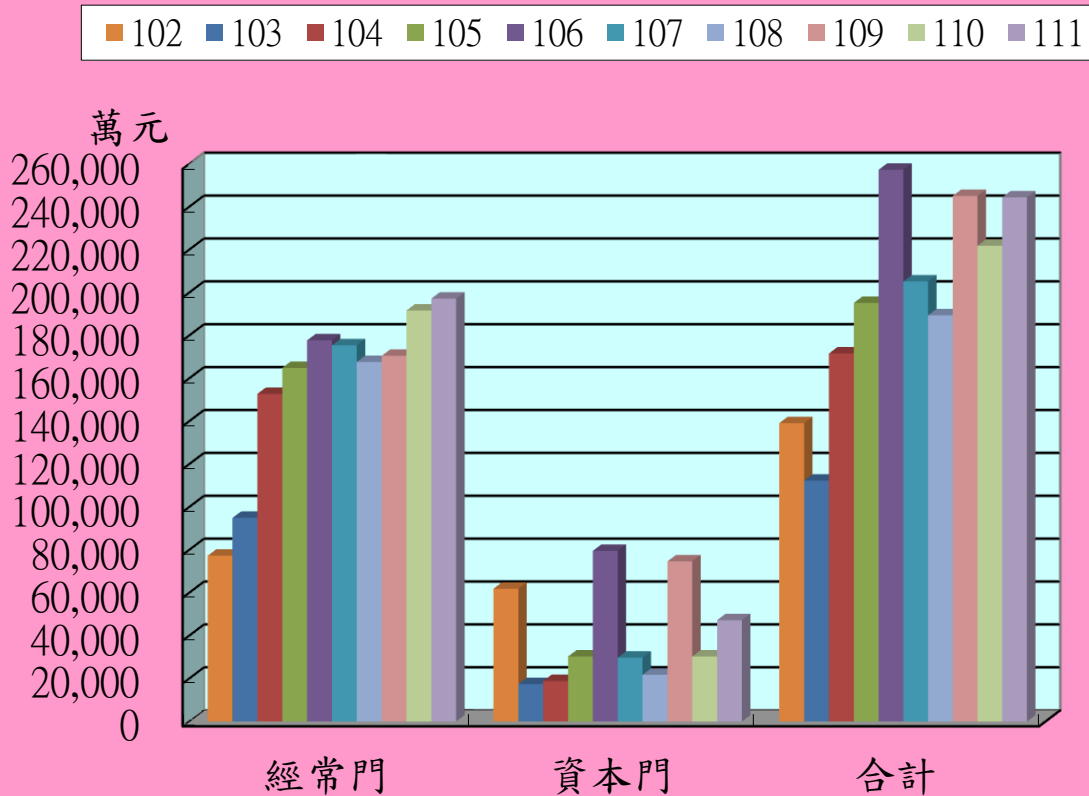
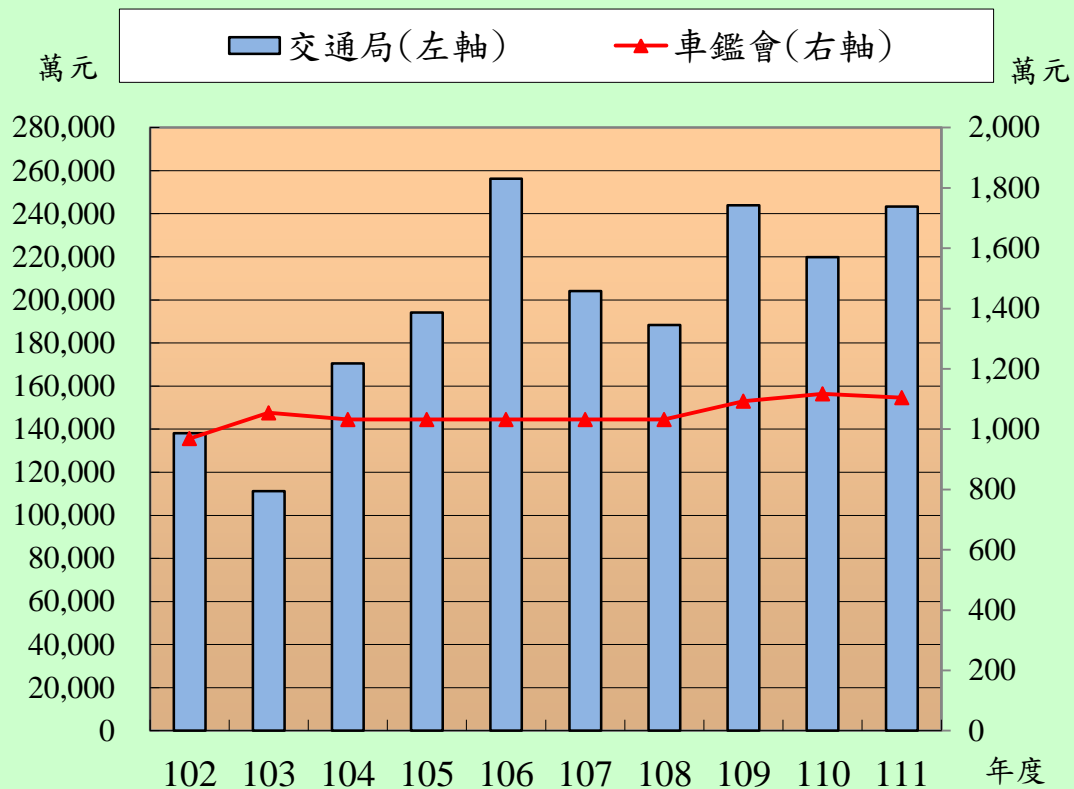
二、本局暨所屬機關現任公教人員數—官職等、性別



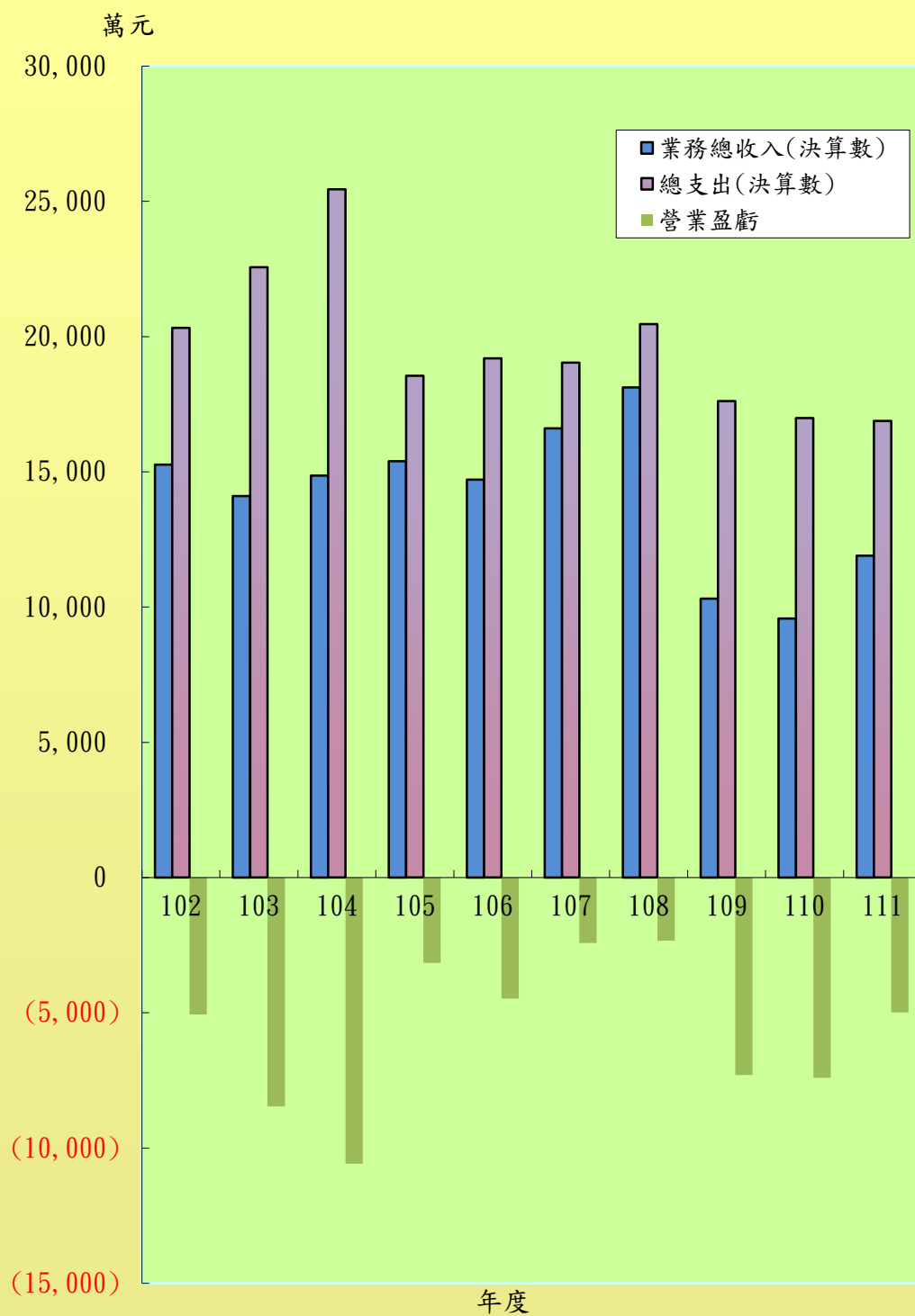
總計217人



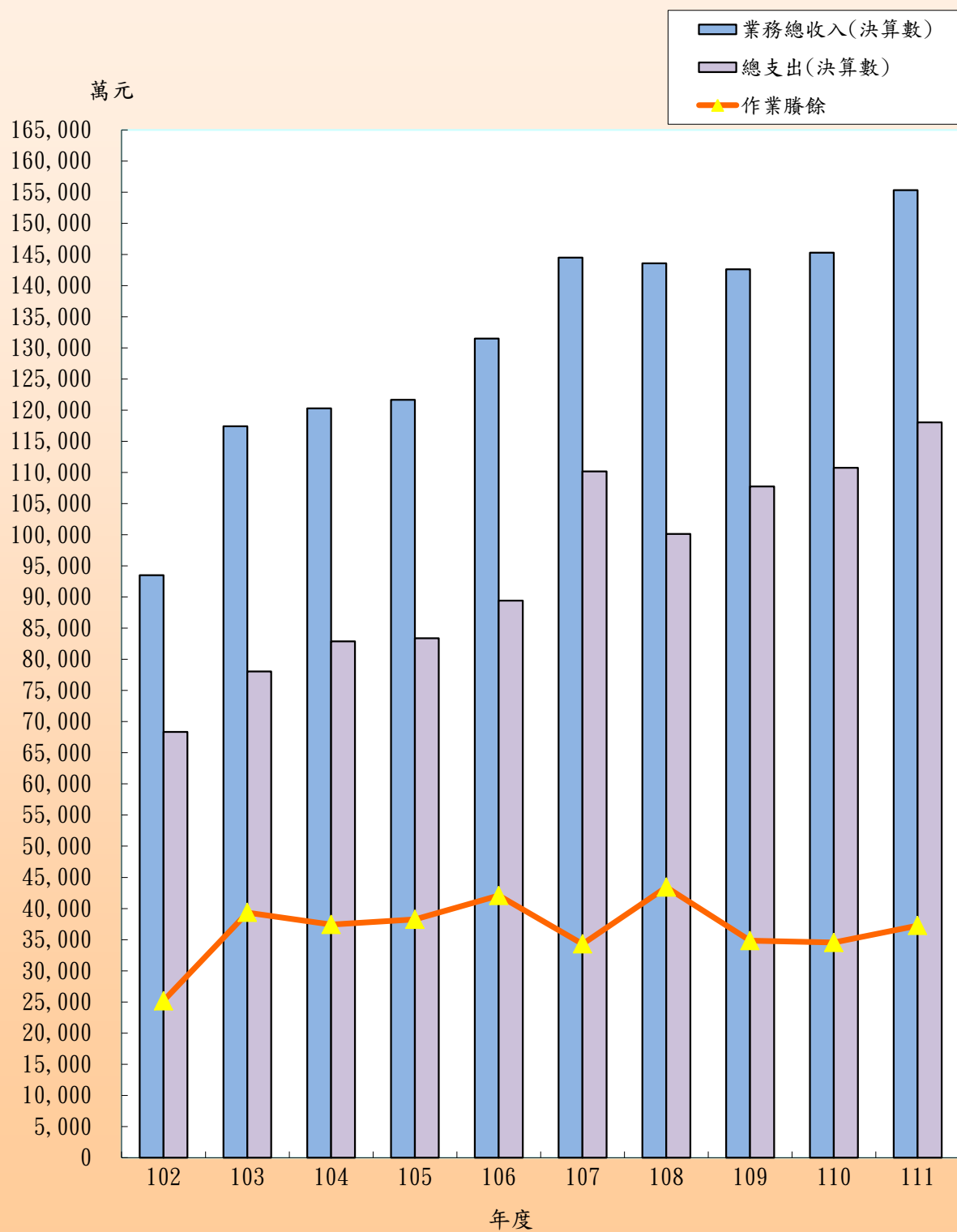
三、本局暨所屬機關歲出預算情形



四、高雄市輪船股份有限公司營業基金財務狀況



五、高雄市停車場作業基金財務狀況



六、高雄市市屬停車位概況

